

Panasonic

DP-C405

astute

Digital Color Imaging Solutions

DP-C405 | DP-C305 | DP-C265

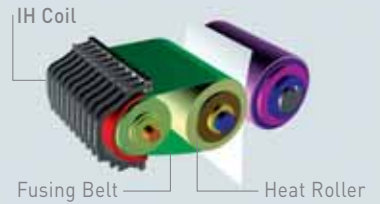


c3 series
connect converge communicate

Panasonic ideas for life



15-Second Warm-up time



IH TECHNOLOGY

Panasonic's C3 Series color MFP is ready to go in only 15 seconds* – about 1/3 the time of conventional laser-based MFP's. Panasonic features the unique IH (induction heating) fusing process which not only instantly reaches operating temperature but also eliminates the need for maintaining a high standby temperature, thereby conserving energy.

*15 seconds from sleep mode
18 seconds from turn on

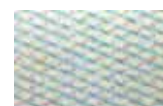
1200 DPI IMAGE QUALITY

High-resolution output makes text sharper and documents easier to read. Images are reproduced with true-to-life quality and superb gradations. Every document is a statement of what you are about – quality.

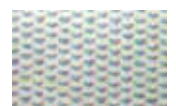


UNIFORM TONER DISTRIBUTION

Technology to constantly monitor and adjust toner distribution ensures that every print looks as good as the first. In addition to producing smooth tonality, the smaller, uniform particles of the next-generation toner have a lower fusing temperature for improved energy savings.



Conventional screen



The improved C3 screen



CONNECT, CONVERGE AND COMMUNICATE WITH COLOR!

Accelerate Success with High-Speed Printing

The newest members of the C3 lineup are faster with increased speed for both color and monochrome, boasting one of the fastest warm-up times in the industry. In as little as 15 seconds, the DP-C405 is ready to print black-and-white at 40ppm and color at 30ppm (DP-C305: 30ppm color/B&W, DP-C265: 26ppm color/B&W). To keep up with the speed, all models also feature enhanced capacities. The iADF holds up to 100 originals, while the bypass accommodates a maximum of 100 sheets and handles paper weights of up to 140 lb Index. The paper trays hold a maximum of 2,300 sheets and can feed paper with weights up to 90lb. index. The internal 80GB HDD offers plenty of capacity for the largest print jobs.

Streamline Business with Ease of Use

Seeking accessibility that goes beyond "easy to use", Panasonic is committed to designing products that are truly user friendly for people of all ages and abilities. The C3 is designed to allow everyone to take full advantage of its multifunctionality, with it's User-friendly menus and easy to read graphics on the large 7.8" color LCD tilt display. Even the most advanced functions are a snap. Ease of use is just one more way Panasonic accelerates your work and enhances your productivity.



Superb Image Quality Print after Print

Make a vivid statement with documents printed in full color at up to 1200 dpi x 1200 dpi resolution. The small, uniform particles of toner create smoother halftone reproduction for images while the Automatic Picture Image Control system adjusts and evenly distributes toner for consistently superior output quality even after thousands of pages. Enhanced image processing delivers more accurate color expression for more natural flesh tones as well as adjusts contrast for vibrant colors. If outstanding image quality is your priority, the Panasonic C3 is the ideal solution.

UNIVERSAL DESIGN

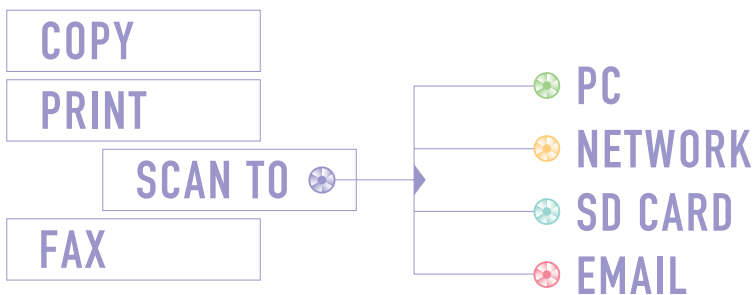
At Panasonic, we engineer all the principles of UD in all our products from equitable use and flexibility to simple intuitive operation and tolerance for error. In the C3 series, our commitment is reflected in details like the intuitive tactile cues for the visually challenged, an easy to grip ADF and tilt display for easy viewing from any angle. All designed for easy use.





Multiply the Power of Information

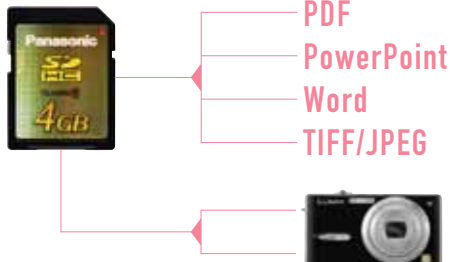
Speedy and efficient sharing of information is the essence of a successful business. Enhanced multi-tasking lets you take advantage of the multifunction scanning capability while the C3 is receiving faxes or printing. With Panasonic color MFPs, "Scan & Send" color or monochrome digital documents directly from the control console to any PC in PDF, Compressed PDF, JPEG or TIFF format. "Scan & Carry" images by directly scanning to an SD memory card. "Scan & Archive" with efficient Compressed PDF technology and revolutionize the way you store and manage archival data. The powerful scanning versatility of the new C3 lineup is also your gateway to a "paperless" office environment, allowing you to easily convert bulky paper into digital data for efficient storage. For standardized corporate information, photos, forms and other files may be frequently printed by others in the office. "Scan & Share" can be utilized to save both scanned documents and images right in the unit's large hard disk drive.





Simple & Direct Printing with High Capacity SD Card

Skip the PC and go straight to the source with direct memory card printing. Now compatible with convenient High Capacity SD card memory, the new C3 lineup not only lets you print photos from your digital camera in JPEG format, but also MS Word, PowerPoint, TIFF and PDF files! Just put the memory card in the built-in slot and it's ready.



COMPRESSED PDF

Shrink file size while retaining excellent text legibility with the compressed PDF format. It not only contributes to significant savings in digital storage costs, but also allows you to send files quickly and efficiently over the network and the files even open quicker!

SHARED IMAGE BOX

Create up to 12 Image Boxes in the built-in HDD and scan in frequently used documents and images for everyone to share. Network users can preview files in Image Boxes from any PC, using a web browser.



LDAP ADDRESS BOOK

If your company uses an LDAP (Lightweight Directory Access Protocol) server, our new lineup lets users access huge global address books and quickly find recipient email addresses from the LCD touch panel by entering multiple letters to narrow the search.

MISTAKE DIAL PREVENTION

No more faxes sent to the wrong destination! System administrators can set 3 levels of protection: 1) Re-entry of manually entered numbers to prevent misdialing, 2) No acceptance of keypad dialing, and 3) On-screen confirmation of the addressee before transmission.



JUNK FAX FILTER

Fax sender IDs are matched against a "black list" of junk fax numbers. If a match is found, reception is cancelled, saving you time, toner and paper.

THUMBNAIL PREVIEW

From your digital camera's memory card, quickly navigate and select images for printing with the Thumbnail Preview. The large, high-resolution LCD display makes it easy to find just the right data you want.

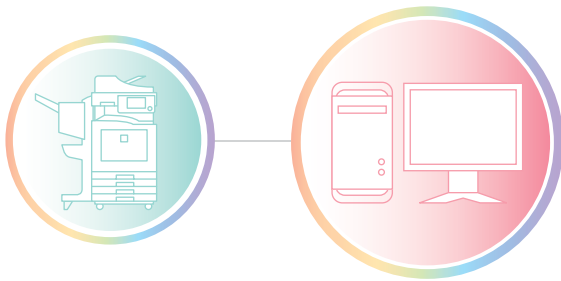


Harness the Hardware with Powerful Applications

The acclaimed Panasonic Document Management System Software is a powerful suite of applications for seamless command of printing, PC-Fax, scanning, document management and device management. Right at your desk you can control and monitor many functions the C3 offers. Browse all your scanned documents in Quick Image Navigator, then select an image and print or attach to an email. You can even edit the image or make notations. With the included PC-Fax software, you can send a Fax without leaving your desk. You can also monitor the printer's condition such as your job's status or how much toner is left. You can do all this and more right at your desk! And now, with Panasonic's Network Update Service, your software is automatically updated so you can be sure that you are using the latest version all the time.

▶ Panasonic-DMS

PANASONIC DOCUMENT
MANAGEMENT
SYSTEM SOFTWARE



PRINTING

PC-FAX

SCANNING

DEVICE MANAGEMENT

Outstanding Security

Panasonic color MFPs not only bring multifunctionality into a single easy-to-use hub, but also enable centralized information security with powerful features such as network User Authentication. Job Tracking logs time, sender and content of faxes, email and Internet faxes sent from the MFP and provides the administrator with a data record by email. And with the optional Network Accounting Manager, even transmitted and received faxes can be easily monitored. Other functions like Secure Mailbox Printing to prevent viewing of confidential documents in a busy office situation and HDD Data Erasure for deletion of sensitive information from the MFP's hard disk further enhance security and your peace of mind.



NETWORK ACCOUNTING MANAGER

Keep track of machine use by department or individual users and maintain an account log with the optional Network Accounting Manager. The Job Tracking log answers the "who", "what", "when" and "where" questions about your information traffic for a better command of security.



DIRECT PRINTING SYSTEM

Drag and Drop printing of JPEG, PDF and TIFF files without using a printer driver.

MEMORY CARD PRINT UTILITY

Print JPEG, TIFF, PDF, WORD and PowerPoint files directly from the High Capacity SD card or PC Card.

FAX DRIVER

Save paper, by eliminating the steps of first printing out a document. Easy to use utility for sending faxes.

PANAFAX DESKTOP

Powerful application to send and receive faxes right from your desktop.

QUICK IMAGE NAVIGATOR

Scanned in and archived images on the network can be viewed, edited and printed or sent easily with Quick Image Navigator.

DEVICE EXPLORE/DEVICE MONITOR

Monitor the status of the printer easily from your desktop.

SECURE MAILBOX

In large busy offices, others can mistakenly take or see confidential documents left in the output tray before you can pick them up. Secure mailbox printing makes sure the printout does not begin until the user enters both the correct user name and a PIN code at the MFP control panel.



USER AUTHENTICATION

Restrict copier, scanner, fax and/or printer usage by requiring a user ID and password. The User Authentication system supports easy tracking and management of all data sent and received.

DP-C405

DP-C305

DP-C265



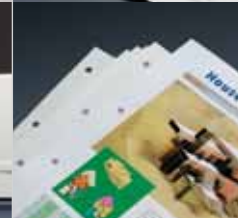
30^{Color} PPM 40^{B/W} PPM

30^{Color} PPM 30^{B/W} PPM

26^{Color} PPM 26^{B/W} PPM

"Meeting Ready" with the Advanced Finisher

The versatility of the optional finisher now has enhanced capacity. Automatically sorting, saddle-stitching and folding, it can transform 15 letter, ledger or legal-size sheets into beautifully printed 60-page booklets. Offering a choice of automatic stapling, hole punching, saddle-stitching and several sorting options, C3 "on demand" printing is just a click away on your PC, freeing you from the expense of outside contractors. Other useful functions include banner printing for easy poster making and Double Exposure for printing of double sided ID cards or forms.



NEW LINEUP OF SMARTER SOLUTIONS
Only 15 seconds from cold start to warm up. Faster output. Expanded capacity. High-productivity options. Countless innovations and improvements. The enhanced C3 lineup of award-winning color multifunction printers has a powerful solution tailored to your business.

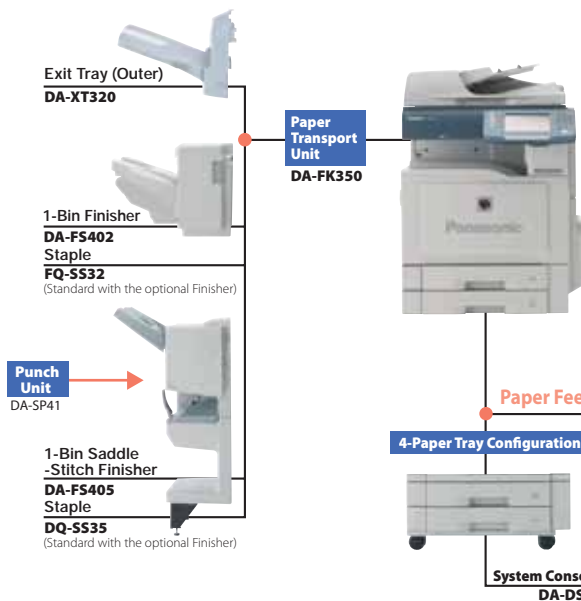
BOOKLET BUILDER
Produce perfectly bound booklets automatically. User-friendly menus on the console and in the printer driver interface walk the user through the steps with helpful icons and offer a binding selection from stapling and hole punching to saddle stitching.

BANNER PRINTING
Communicate with the impact of posters and large-format documents. Using the bypass tray, users can print up to 36" oversized output in brilliant eye-catching color and do it all in-house!

Double Exposure / Digital SkyShot
Make color copies of ID cards and other double-sided documents on a single sheet of paper. Even with the platen cover open, there are no ugly borders. You save time, paper and toner, and get beautiful results.



DP-C405/C305/C265 Options



Options

Printer Options	
Printer Controller Module (for Adobe®PostScript®3™)	DA-MC400
FAX Options	
Fax Communication Board	DA-FG320
Memory Options	
Page Memory (256 MB)	DA-PMV56
Software Options	
Accounting Software	DA-WA10
Document Distribution System	DA-WR10
Document Distribution System Unlock Module	DA-UK10
Remote Operation Panel Software	DA-UD320
Other Options	
Data Security Kit	DA-SC04
Mechanical Counter	PJWEF2170PU
Coin Vendor Interface Kit	PJZEF3310PB

Consumables

Toner	
Toner Cartridge (Black)	DQ-TUW28K (for DP-C405)
	DQ-TUV28K (for DP-C305/C265)
Toner Cartridge (Cyan)	DQ-TUV20C
Toner Cartridge (Magenta)	DQ-TUV20M
Toner Cartridge (Yellow)	DQ-TUV20Y
Toner Waste Container	
Toner Waste Container	DQ-BFN45
OPC Drum Unit	
OPC Drum Unit (Black)	DQ-UHS36K
OPC Drum Unit (Color)	DQ-UHS30
Staple	
Staples for DA-FS405	DQ-SS35
Staples for DA-FS402	FQ-SS32

DP-C405/C305/C265 Specifications

General	
Type	Semi Console
Copy/Print Process	Laser Indirect Electrostatic
Developing Process	Dry Dual Component
Fusing Method	Induction Heating (IH) System
Inverting Automatic Document Feeder	100 sheets (8.5" x 11", 20 lb)
Paper Feed	Standard 550 sheets paper tray unit x 2 + 100-sheet bypass Max. 2,300 sheets with option
Paper Weight	Paper Tray: 18 to 45 lb (64 to 169g/m ²) (Bond Paper) Bypass: 15 to 40 lb (55 to 256g/m ²) (Bond Paper) 90 - 140 lb (Index, Coated Paper)
Media Interface	SD Card max. 4GB (SDHC) PC(PCMCIA) Card Type 2, 3.V
Power Requirements	AC 120 V, 60 Hz, 12 A
Power Consumption	Max.: Less than 1.44 kWh Power saver mode: Approx. 75 Wh Sleep mode: Approx. 35 Wh
Warm-up Time (68°F/20°C)	Approx. 15 sec. (from Power Saver mode/sleep mode) Approx. 18 sec. (Main Power switch ON)
Dimensions (W x D x H)*1	26.1" x 32.5" x 36.7" (664 x 825 x 933 mm)
(Excluding optional equipment)	(Including Automatic Document Feeder and ADF mounting bracket)
Weight (Excluding optional equipment)*1	Approx. 360.8 lb (164kg)
Digital Copier	
First Copy Time	B/W: Approx. 6.2 sec. (8.5" x 11") (DP-C405) Approx. 6.7 sec. (8.5" x 11") (DP-C305) Approx. 7.3 sec. (8.5" x 11") (DP-C265) Color: Approx. 10.3 sec. (8.5" x 11")
Resolution	Up to 600 dpi
Gray Scale	256 steps
Multi Copy Speed*2	B/W: Up to 40 ppm (DP-C405) Up to 30 ppm (DP-C305) Up to 26 ppm (DP-C265) Color: Up to 30 ppm (DP-C405/C305) UP to 26 ppm (DP-C265)
Maximum Original Size	11" x 17"
Copy Size	11" x 17" - 5.5" x 8.5"
Copy Ratio	Enlargement: (fixed) 200%, 155%, 129%, 121% Reduction: (fixed) 79%, 77%, 65%, 61%, 50%
Zoom (variable)	25% - 400% (in 1% increments)
Multiple Copy	1 to 999, Automatic reset to 1
Exposure Control	Text, Text / Photo, Photo
Sort Memory	Standard 30 GB

Printer	
Network Printer Interface	Ethernet 10Base-T/100Base-TX
Communication Protocol	TCP/IP(LPD)(Port9100/Raw), SNMP, DHCP), IPX/SPX(NDS/Bindery/NDS/PS), AppleTalk (PS), IPP, Bonjour (PS)
Local Printer Interface	USB 2.0
Printer Language	(Standard) PCL 6 Emulation, (Option) Adobe® PostScript® 3™*3
Printing Speed*2	B/W: Up to 40 ppm (DP-C405) Up to 30 ppm (DP-C305) Up to 26 ppm (DP-C265) Color: Up to 30 ppm (DP-C405/C305) UP to 26 ppm (DP-C265)
Paper Size	Paper Tray: 11" x 17" - 5.5" x 8.5" Bypass: 12" x 36" - 4" x 6"
Printing Resolution	1,200 dpi x 1,200 dpi*4, 600 dpi x 600 dpi, 300 dpi x 300 dpi
Printer Memory	512MB Standard 768MB Max
PCL/PS Spool Memory	3 GB
Compatible Client Operating Systems	Windows® Vista®, Windows® XP/2000/Server 2003 Mac OS 8.6-10.5(PS 3 only)
Compatible Network Operating Systems	Windows® 2000/Server 2003, Novell 3.x/4.x/5.x/6.x, Unix (LPR), Linux (LPR), AS/400
Network Scanner / Scan-to-Email	
Network Scanner Interface	Ethernet 10Base-T/100Base-TX
Communication Protocol	TCP/IP (LPR, FTP)
Maximum Scanning Size	11" x 17"
Scanning Speed	45 sheets/minute (8.5" x 11")
Scanning Resolution	200 dpi x 200 dpi, 300 dpi x 300 dpi, 400 x 400 dpi, 600 dpi x 600 dpi
Compatible Client Operating Systems	Windows® Vista®, Windows® XP/2000/Server 2003
Data Format	B/W: TIFF, PDF, Compressed PDF Color: JPEG, PDF, Compressed PDF
Address Book Capacity	1,000 stations
(including Network scanner,	
Scan-to-Email, G3 Fax and Internet Fax)	

G3 Fax (Option) / Internet Fax	
Compatibility	G3 Fax: ITU-T Group 3, ECM Internet Fax: ITU-T.37, IETF RFC 3965
Communication Protocol	TCP/IP, SMTP, POP3, MIME, LDAP (Internet Fax)
Modem Speed	33.6 kbps - 2.4 kbps with automatic fallback (G3 Fax)
Coding Scheme	JBIG / MMR / MR / MH (Conforms to ITU-T Recommendations)
Scanning Speed*3	Approx. 0.7 sec. (8.5" x 11" portrait in Standard or Fine mode with ADF)
Transmission Speed*4	Approx. 2.9 sec. (Letter)
Scanning Resolution	Standard: 203 dpi x 98 lpi (8 dots/mm x 3.85 lines/mm) Fine: 203 dpi x 196 lpi (8 dots/mm x 7.7 lines/mm) Super Fine: 406 dpi x 391 lpi (16 dots/mm x 15.4 lines/mm) 600 dpi: 600 dpi x 600 dpi
Maximum Original Size	11" x 17"
Effective Scanning Width	11.5" (292mm)
Recording Resolution	600 x 600 dpi
Standard Memory*7	3 MB (approx. 180 pages based on ITU-T Image No.1 using Standard Resolution)
Optional Memory*7	Max. 96MB
Data Format	TIFF-FX (Profile S/F/J)

Note

- *1 Dimensions and weights are approximate.
- *2 Speeds are contingent upon applications, machine configuration, and status. Individual speeds may vary.
- *3 Requires Printer Controller Module option.
- *4 Requires optional page memory.
- *5 Scanning speed applies to the feeding process from the top to the end of a single page test chart. The time for the feeding process does not include the time that it takes for the top edge of the page to reach the scanning point and page ejection. Time for entire storing process is not applied.
- *6 Transmission time applies to memory transmission of text data using only ITU-T Image No.1 between the same models at maximum modem speed. Transmission time may vary in actual usage. Usually public telephone lines can only support communication speeds of 28.8 Kbps or lower. Via PBX, transmission speed may fall back to a lower speed.
- *7 Based on ITU-T Image No.1 scanned in Standard mode.
- *8 Depending on the receiving machines capability, the document may not be correctly printed depending on the chosen resolution and document size.

Design and specification are subject to change without notice.
Not all options may be available at the time of notification.

Microsoft® Windows® is a registered trademark of Microsoft Corporation.
Adobe, PostScript and PostScript 3 are either registered trademarks or trademarks of Adobe Systems, Inc.
Novell Netware® and Novell Directory Services® are registered trademarks of Novell Inc.,
in the United States and other countries.

PCL is a registered trademark of Hewlett-Packard.

The SDHC logo is a trademark.

All other brand or product names are the property of their respective holders.

IPV6 Ready Logo is the international IPV6 product's certification program managed by the IPV6 Ready Logo Committee.

This Product is designed to reduce hazardous chemical substances along with the RoHS directive.



Panasonic Communications Company of North America
One Panasonic Way, Secaucus, NJ 07094
For a local dealer, please call 1-800-742-8086
panasonic.com/office



Adobe PostScript 3



As an Energy Star Partner, Panasonic has determined that this product meets the Energy Star Guidelines for energy efficiency.



ISO 9001 Quality Management System

Our business processes which produce document, information and network products, from manufacturing to marketing, conform to ISO9001 Quality Management Systems standard. Design, development, manufacture, installation, repair and maintenance of document, information and network products, their associated devices and consumables. In addition, the plants outside Japan have acquired ISO9001 certification.