

**Panasonic**  
ideas for life

Plain Paper Laser Fax  
**UF-8100**  
**UF-7100**

# Committed



**Panafax**

**UF-8100**

**The ultimate  
in speed and  
quality**



**UF-7100**

**The shape of  
stability and  
reliability**

# more powerful, more reliable

## Easy and Reliable Fax

### Maximum 1000-Station Auto-Dialler

For quick dialling, you can program fax phone numbers/email addresses\* with 280-station auto-dialler (80 One-Touch/200 Abbreviated) from the QWERTY keyboard or program the Auto-Dialler and import a listing from an existing PC file\*\* using the standard Address Book Editor Software on your PC. Auto-Dialler capacity can be expanded to a maximum of 1,000 stations with an optional SD memory card.



### Quick Name Search

Quick Name Search maximises the Auto-Dialler's large memory capacity by providing quick, easy access to stored names and numbers. Simply key in the first letter of the recipient's name on the QWERTY keyboard and press it repeatedly to scroll through the listings that appear on the display. When you find the name you're looking for, just select it. It's that simple!

### Directory Search

Directory Search allows you to enter multiple letters via the QWERTY keypad to narrow down the search and quickly find the name you're looking for in a large database such as an LDAP\*\*\*\* (Lightweight Directory Access Protocol) server or the optional 1,000-station Auto-Dialler. The UF-8100/UF-7100 retrieves both fax phone numbers and email addresses\* from the LDAP server's directory. The LDAP directory also allows users to easily program the fax phone numbers/email address\* into the Auto-Dialler.

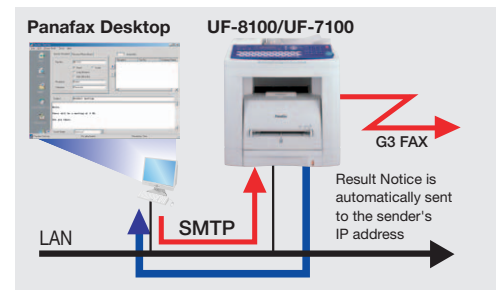
### Dual-Line Fax Communication Productivity (UF-8100 only)

With the optional G3 fax communication port installed, the UF-8100 can handle the same communication volume as two separate machines. Each communication port works independently so that each line can be configured for send only, receive only or both according to your needs.



### Panafax Desktop Software\*

The Panafax desktop software works on a networked PC to send a fax directly from your Windows® application software without having to print it on paper before transmitting.



### Duplex Scanning/Printing Capability

Even with double-sided originals, simply scan the first side through the ADF, then scan the other side. The UF-8100/UF-7100 automatically shuffles the scanned pages in the original page order and transmits. Also, the UF-8100/UF-7100 is able to print a received multi-page fax on both sides of the paper.

## Versatile Printing/Scanning Features

### Built-in Network Printing Capability

The UF-8100/UF-7100 comes standard with a built-in Ethernet LAN interface and can be automatically set up as a high speed 18-ppm (14-ppm for the UF-7100) network printer as soon as it is plugged into the network using DHCP client feature. In addition the standard USB 1.1 interface allows direct connection to a local PC.

### High Resolution of 1200-equivalent x 600 dpi

In addition to standard 600 x 600 printing resolution, you can improve the print resolution to 1200 dpi-equivalent x 600 dpi by adding the optional PCL printer controller. This gives crisp, clean prints with superior legibility and halftone gradations.

### Standard Duplex and 2-in-1/4-in-1 Printing

For added productivity, the UF-8100/UF-7100 comes standard with an automatic duplex printing capability that allows you to print on both sides of a sheet of paper. Cost-effective and fast, double-sided printing can be used together with 2-in-1/4-in-1 printing to greatly reduce your paper expenses and save on filing space.

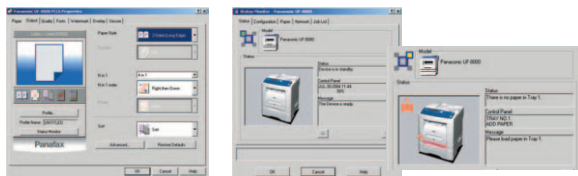
# e, more versatile



## Mailbox Print/Secure Mailbox Print\*\*\*

Mailbox Print ensures that your printouts don't get mixed up with someone else's by storing your printouts in a specified mailbox. Secure Mailbox Print carries out the Mailbox Print jobs when the correct user password is entered.

## Easy Print Driver Installation, User-Friendly Graphical Interface, and Status Monitoring

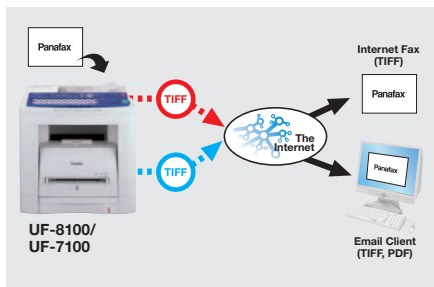


Printer Driver

Network Status Monitor

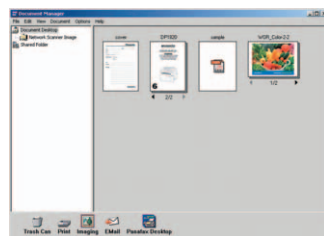
## Internet Fax and Scan-to-Email/PC/FTP Server

With the optional Internet Fax/Email/Network Scanner Module, the UF-8100/UF-7100 can send documents to an ITU-T T.37 Internet Fax machine, an Email Address, a networked PC or a FTP Server as a PDF or TIFF file.



## Document Workflow with Document Management System software

Panasonic Document Management System software streamlines your document workflow, allowing you to manage and control all processes right from your PC desktop. All you have to do is drag and drop the thumbnail picture of the scanned document onto an icon of the pre-programmed PC application such as OCR, Email or image editing software.



## Extended Reliability

### Fast Multi-Task Processing

The UF-8100/UF-7100's custom-developed chipset maximises microprocessor power for fast, high quality image processing and multi-tasking operation.

### Maintenance Support

The Check & Call\*\*\*\* function automatically reports low toner status and certain mechanical problems to a service centre while the Remote Diagnostic System\*\*\*\*\* enables expert technicians to quickly troubleshoot and provide solutions via a telephone line or the Internet.



- \* Internet Fax/Email/Network Scanner Module is required.
- \*\* CSV/Comma-delimited text file
- \*\*\* Optional SD Memory Card is required.
- \*\*\*\* This function is not available in certain destinations. Requires an LDAP server on the network.
- \*\*\*\*\* This function is not available in certain destinations.



When it comes to office equipment, nothing is more important than consistent, reliable performance. But just because a task is simple doesn't mean that it is always easy to do. For example, automatic document feeding is one of the most essential features of a fax machine. So when it doesn't work the way you want it to, it can lead to a lot of frustration.

That's where the UF-8100/UF-7100 comes in. From a one-page fax to massive multi-page transmissions to multiple locations, the UF-8100/UF-7100 is designed to take care of any document, big or small.

Supported by a fast 0.8-second Quick Scan (1.5 seconds for the UF-7100), the large-capacity 100-page Auto Document Feeder handles documents large or small with ease, while ensuring top-level quality and speed.

Ease of use is vital, and like most fax machines the UF-8100/UF-7100 comes with an Auto-Dialler. The difference is that the new UF-8100/UF-7100's versatile auto-dialler is much easier to program and search than its predecessors.

Best of all, the UF-8100/UF-7100 is built to last and designed to grow. As your business grows, the UF-8100/UF-7100 grows with it. Easy upgrades like Send-to-Email/PC on your local area network make the UF-8100/UF-7100 the right choice for today and tomorrow.



## Features

- Auto Dialler: up to 280 stations (up to 1000 stations with optional SD memory card)
- One-touch: up to 80 stations
- Abbreviated: up to 200 stations
- Digit of Telephone number (up to 36 digits)
- Program Keys (up to 80 programs)
- Multi-Tasking Operation
- Directory Search Dialling
- Directory Sheet Print
- Intelligent Redial
- Chain Dialling
- Quick Memory Transmission
- Multi-station Transmission (up to 330 stations)
- Deferred Transmission
- Deferred Multi-station Transmission
- Duplex Transmission
- Receive to Memory
- Substitute Reception
- Number of memory job files (Max. 50 files)
- Fax Forward
- Polling /Multi-station Polling
- Deferred Polling / Deferred Multi-station Polling
- Memory Polling Transmission (1 file)
- ITU-T Sub-address Transmission
- 256-Level Halftone
- Automatic/Fixed Reduction
- Collation Stack
- Verification Stamp
- Communication Journal with image data
- Header/Total Page Print
- Transmission Journal with view mode
- Fax Access Code (Fax Lock)
- Multiple Copy with Sorting (up to 99)
- Duplex Copy
- Zoom/Reduction Copy
- Sort Copy
- Bypass Copy
- Energy Saver
- Remote Diagnostic
- Check & Call Function
- LAN PC Fax software (Panafax Desktop)
- Document Manager
- Document Viewer with Annotation
- Network Address Book Editor
- Network Configuration Editor
- Network Status Monitor
- User Authentication\*
- Fax Transmission via RightFax Server\* (Requires RightFax Ver. 8.0 or later)
- DHCP
- LDAP (Lightweight Directory Access Protocol) compatible
- SMTP Authentication\*

\* Optional Internet Fax/Email/Network Scanner Module is required

## Options

**Memory**  
SD Memory Card (Maximum 512MB)

**Expansion Board**  
DA-EM600

**Printer Controller Module**  
UE-404091

**Internet Fax/Email/Network Scanner Module**  
UE-404090

**G3 Communication Port Kit (2nd G3 Fax)**  
UE-407026 (UF-8100 only)

**Handset Kit**  
UE-403172

**Consumables**  
Toner cartridge

**550-sheet 2nd Paper Feed Module**  
DA-DS188

## UF-8100/UF-7100 Specifications

### General Specifications

Type	Desktop
Power Requirement	AC 220 V - 240 V, 50/60 Hz
Power Consumption	Max: Approx. 1000 W Power saver mode: 13 W Sleep mode: 8 W
Dimensions (W x D x H)*1	450 x 418 x 448 mm (Excluding optional equipment)
Weight*1	Approx. 22 kg (Excluding optional equipment)

### Fax Specifications

Compatibility	ITU-T Group 3, ECM
Modem Speed	33.6 kbps - 2.4 kbps with automatic fallback
Coding Scheme	MH/MR/MMR/JBIG
Transmission Speed*2	Approx. 2.9 sec./page (A4)
Number of Memory Job Files	50
Document Size	Max: 216 mm x 1000 mm*3 with operator's assistance Min: 140 mm x 140 mm
Effective Scanning Width	208 mm
Automatic Document	100 pages (75 g/m <sup>2</sup> )
Feeder Capacity	
Scanning Speed*4	UF-8100: Approx. 0.8 sec./page (A4, 8 dots/mm x 3.85 lines/mm) UF-7100: Approx. 1.5 sec./page (A4, 8 dots/mm x 3.85 lines/mm)
Scanning Resolution	Standard: 8 dots/mm x 3.85 lines/mm Fine: 8 dots/mm x 7.7 lines/mm Super Fine: 16 dots/mm x 15.4 lines/mm 600 dpi: 600 dpi x 600 dpi
Recording Method	Monochrome laser printing on plain paper
Recording Paper Size	A4 - A5*5
Effective Recording Width	201 mm (A4)
Paper Feed	Standard Tray: 250 sheets paper tray unit x 1 + 1-sheet bypass Max. 800 sheets with option
Image Memory Capacity*6	Standard: UF-8100 12MB (720 pages) UF-7100 3MB (180 pages) Max.: 512MB (12,750 pages)
Number of Auto Diallers	Standard: 280 Max: 1,000 with optional SD Memory Card (32MB to 512 MB)

### Printer Specifications

Network Printer Interface	Ethernet 10Base-T/100Base-TX
Local Printer Interface	USB 1.1
Printing Speed*7	UF-8100 : Approx. 18 ppm UF-7100 : Approx. 14 ppm
Paper Size	Standard paper tray:A4 - Envelope (DL) Optional paper tray: A4 - B5 Bypass tray: A4 - Envelope (DL), Foolscap
Printing Resolution	1200 dpi equivalent x 600 dpi (PCL) 600 dpi x 600 dpi, 300 dpi x 300 dpi (PCL, GDI)
Printer Memory	32MB
Printer Language	Standard: Panasonic Printing System for Windows® (GDI) Option: PCL 5e Emulation, PCL 6 Emulation
Compatible Operating System	Windows® XP/2000/Server 2003/98/Me, Windows NT® 4.0

### Network Scanner Specifications

Network Scanner Interface	Ethernet 10Base-T/100Base-TX
Scanning Resolution	600 x 600 dpi, 300 x 300 dpi, 150 x 150 dpi
Scanning Speed*4	UF-8100: Approx. 1.2 sec. (A4, 150 x 150 dpi) UF-7100: Approx. 2.3 sec. (A4, 150 x 150 dpi)
Data Format	TIFF, PDF

### Send-to-Email / Internet Fax Specifications

Compatibility	IETF RFC 3965, ITU-T T.37
Communication Protocol	TCP/IP, SMTP, POP3, MIME, LDAP, SNMP, MIB
Network Connectivity	Ethernet 10Base-T/100Base-TX (IEEE802.3)
Data Format*8	TIFF-FX (Profile S/F/J), PDF

#### Notes

- \*1 Dimensions and weight are approximate.  
\*2 Transmission time applies to memory transmission of text data using only ITU-T Image No.1 between the same models at maximum modem speed. Transmission time may vary in actual usage. Usually public telephone lines can only support communication speeds of 28.8 Kbps or lower. Via PBX, transmission speed may fall back to a lower speed.  
\*3 Standard/Fine mode  
\*4 Scanning speed applies to the feeding process from the top to the end of a single page test chart. The time for the feeding process does not include the time that it takes for the top edge of the page to reach the scanning point and page ejection. Time for entire storing process is not applied.  
\*5 Standard paper tray only  
\*6 Based on ITU-T Image No.1 scanned in Standard mode.  
\*7 Speeds are contingent upon applications, machine configuration, and status. Individual speeds may vary.  
\*8 Internet Fax only supports TIFF-FX format.

Design and specification are subject to change without notice. Not all options may be available at the time of notification.

Microsoft® Windows® and Windows NT® are registered trademarks of Microsoft Corporation.  
PCL is either trademark or registered trademark of Hewlett-Packard Company and/or its subsidiaries.  
Captaris and RightFax are trademarks of Captaris, Inc.  
All other company, brand and product names are the property of their respective holders.



### ISO 9001 Quality Management System

Our business processes which produce document, information and network products, from manufacturing to marketing, conform to ISO9001 Quality Management Systems standard. Design, development, manufacture, installation, repair and maintenance of document, information and network products, their associated devices and consumables. In addition, the plants outside Japan have acquired ISO 9001 certification.



As an ENERGY STAR® partner, Panasonic has determined that product of the UF-8100 meets the ENERGY STAR® guidelines for energy efficiency.

The UF-7100 is not adapted for ENERGY STAR specifications.